

PLAN

Scale: 1/4" = 1'-0"

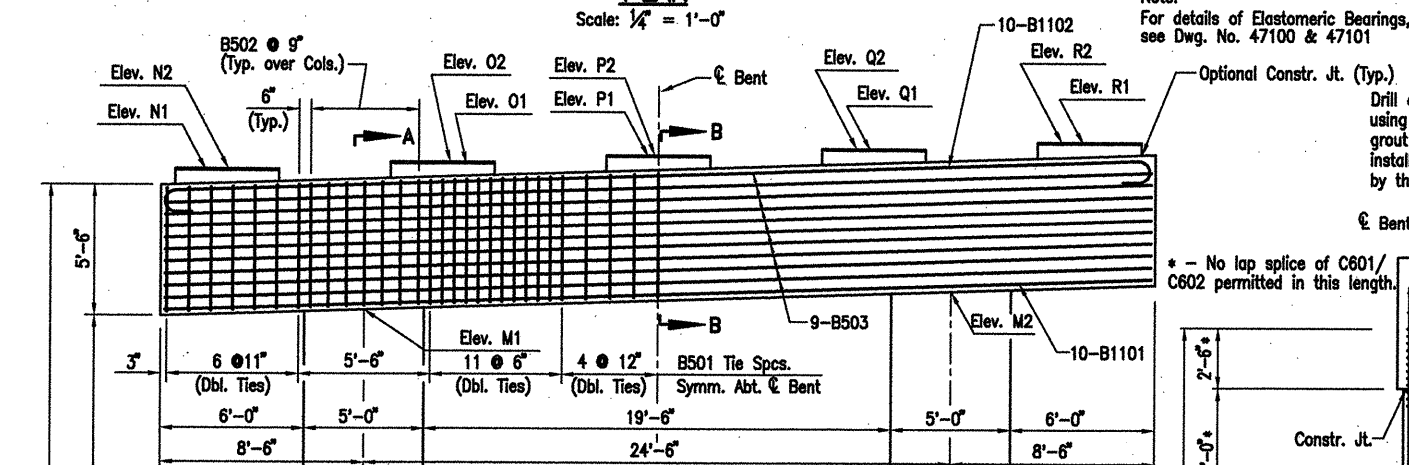
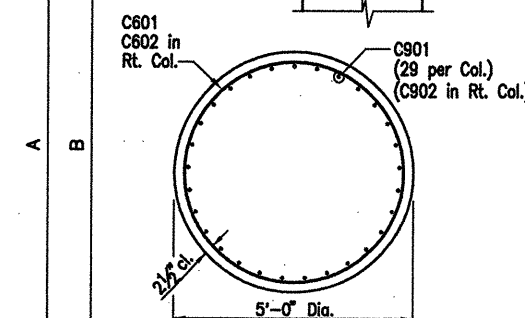


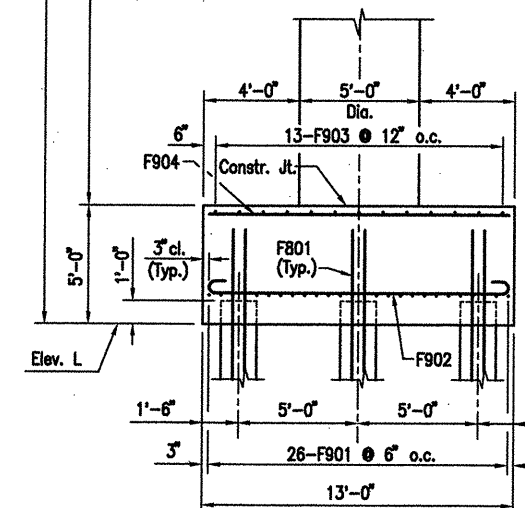
TABLE OF VARIABLES

Variable	Bent No.	57	58	59	60
A	46'-4"	48'-2"	49'-1"	50'-11"	
B	35'-10"	37'-8"	38'-7"	40'-5"	
C1	45'-3"	47'-1"	48'-0"	49'-10"	
C2	46'-1"	47'-11"	48'-10"	50'-8"	
D1	43'-11"	45'-9"	46'-8"	48'-6"	
D2	44'-9"	46'-7"	47'-6"	49'-4"	
E1	21'-10"	23'-8"	24'-7"	26'-5"	
E2	22'-8"	24'-6"	25'-5"	27'-3"	
F1	141	148	151	158	
F2	144	151	154	161	
G1	2049'-2"	2148'-7"	2191'-3"	2278'-5"	
G2	2091'-9"	2191'-3"	2233'-10"	2319'-0"	
Elev. L	157.09	156.74	157.13	156.45	
Elev. M1	198.21	199.69	200.99	202.15	
Elev. M2	199.04	200.52	201.82	202.98	
Elev. N1	203.84	205.33	206.63	207.79	
Elev. O1	204.15	205.64	206.94	208.10	
Elev. P1	204.45	205.94	207.24	208.40	
Elev. Q1	204.76	206.25	207.55	208.71	
Elev. R1	205.06	206.55	207.85	209.01	
Elev. N2	203.88	205.37	206.66	207.82	
Elev. O2	204.19	205.68	206.97	208.13	
Elev. P2	204.49	205.98	207.27	208.43	
Elev. Q2	204.80	206.29	207.58	208.74	
Elev. R2	205.10	206.59	207.88	209.04	



SECTION C-C

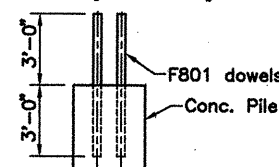
Scale: 1/2" = 1'-0"



ELEVATION

Scale: 1/4" = 1'-0"
Looking Forward

The reinforcing steel shall be placed with the bent cap reinforcing steel. The Contractor has the option to drill and grout the riser reinforcing steel at least 1'-6" into the cap using an approved non-shrink grout or an epoxy grout listed in the QPL. Diameter of holes and installation procedure shall be as recommended by the grout manufacturer. Place bent reinforcing properly to avoid damage. This work shall be paid under "Reinforcing Steel - Bridge".



SECTION E-E

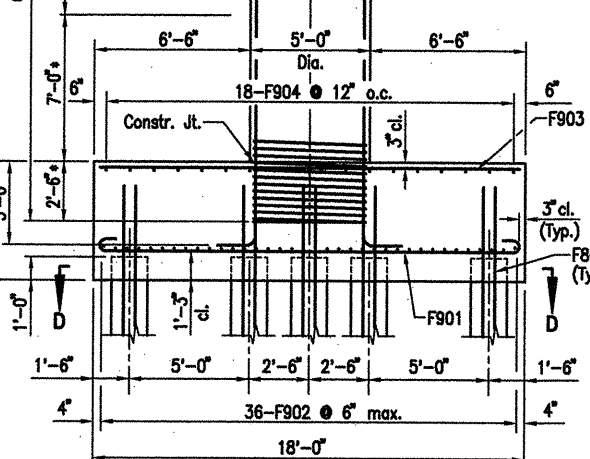
N.T.S.

Drill and grout F801 dowels 3'-0" into piles using an approved non-shrink grout or an epoxy grout listed on the QPL. Diameter of holes and installation procedure shall be as recommended by the grout manufacturer.

Note:
For details of Elastomeric Bearings, see Dwg. No. 47100 & 47101

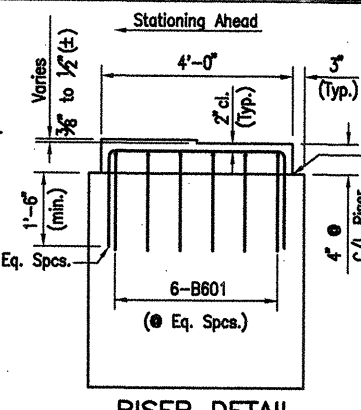
* - No lap splice of C601/C602 permitted in this length.

C601 in Lt. Col. (C602 in Rt. Col.) - F1/F2 Turns @ 3 1/2" Pitch
E1 Lt. Col. (E2 Rt. Col.) Lap Splice of 4'-2" in C601/C602 is permitted in this zone



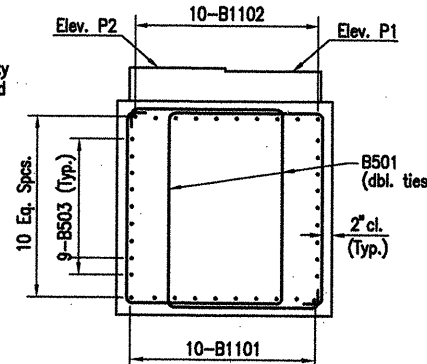
SECTION A-A

Scale: 1/4" = 1'-0"



RISER DETAIL

Scale: 1/2" = 1'-0"

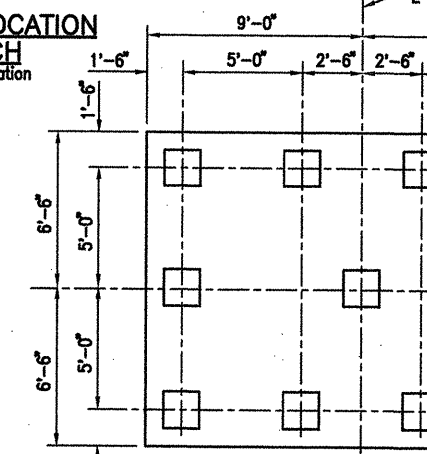


SECTION B-B

Scale: 1/2" = 1'-0"

FOOTING LOCATION

Sketch
Looking Upstation
N.T.S.



SECTION D-D

Scale: 1/4" = 1'-0"

Variable	Bent No.	57	58	59	60
AB1	31'5.76"	2753.11"	2753.11"	2753.11"	2753.11"
AB2	2753.11"	2753.11"	2753.11"	2753.11"	2753.11"

DATE REVISED	DATE FILMED	DATE REVISED	DATE FILMED	FED. ROAD NO.	STATE	FED. AID PROJ. NO.	SHEET NO.	TOTAL SHEETS
					ARK.			
					JOB NO.	110395	40	203
					06830	BENTS		47038

BAR LIST-PER BENT

Mark	No.	Req'd	Length	'A'	'B'	P.D.	Bending Diagrams
B501	90	19'-2"	4'-2"	5'-2"	2 1/2"		Dimensions are out to out of bars.
B502	14	15'-3 1/2"	5'-2"	5'-2"	2 1/2"		
B503	18	41'-2"				Str.	
B601	25	7'-10"	4'-8"	1'-9"	4 1/2"		
B602	30	7'-2"	4'-0"	1'-9"	4 1/2"		
B1101	10	41'-2"				Str.	
B1102	10	44'-2"	41'-2"	1'-0 1/2"	11 1/4"		
C601	1	G1					
C602	1	G2					
C603	4	16'-0"					
C901	29	C1	D1	1'-7"	9"		
C902	29	C2	D2	1'-7"	9"		
F801	88	6'-0"				Str.	
F901	52	20'-0"	17'-6"	10"	9"		
F902	72	15'-0"	12'-6"	10"	9"		
F903	26	17'-6"				Str.	
F904	36	12'-6"				Str.	

NOTES:

- All concrete shall be Class "S". All exposed corners to be chamfered 3/4" unless otherwise noted. All concrete shall be poured in the dry.
- All reinforcing steel shall conform to AASHTO M31 or M53, Gr.60.
- If anchor bolts are drilled into cap, top reinforcing bars shall be properly placed to avoid damage.
- For additional information, see Layout.
- Contractor has the option of placing a 6'-0" lap splice in the vertical leg of C901 & C902 bars. The splice shall be in the middle half of the column height. This shall be included in "Reinforcing Steel Bridge".

NOTES FOR SPIRAL REINFORCING

- Ends of spirals in footing and cap shall have 1 1/2 turns and terminate with a 135° hook and a 24" tail as shown in Bar List.
- Spiral reinforcement at splices of bars in the length designated as permissible for lap splices shall be terminated by a 135° hook with a 10" tail hooked around a vertical bar.
- Spiral reinforcement shall be plain round or deformed steel bars meeting the requirements of AASHTO M31 or M53 (Grade 60) or shall be cold drawn wire meeting the requirements of AASHTO M32 or M225 (Grade 70) with a minimum diameter of 0.75".
- Spiral reinforcement shall be paid for at the contract unit price bid per pound for "Reinforcing Steel - Bridge (Grade 60)". No additional payment shall be made for spacers, splices or bracing needed for assembly, shipping, handling or erecting.
- Lapped splices in spirals shall be lapped 80 bar diameters minimum.
- Adjust spiral pitch as needed to accommodate footing or cap bars.

ALTERNATE NO. 1

DETAILS OF BENTS - WHITE RIVER
BENTS 57 - 60
WHITE RIVER STR. & APPRS.
(CLARENDON) (PH III) (F)
MONROE COUNTY
ROUTE 79 SEC. 13



ARKANSAS STATE HIGHWAY COMMISSION
LITTLE ROCK, ARK.

Engstrom & Modjeski and Masters, Inc.

DRAWN BY: CJA/JDB DATE: Sep. 10 FILENAME: b1103951_b07
CHECKED BY: FS DATE: Nov. 01 SCALE: 1/4"=1'-0"
DESIGNED BY: BMH DATE: Nov. 01
BRIDGE NO. 06830 DRAWING NO. 47038

BRIDGE ENGINEER